

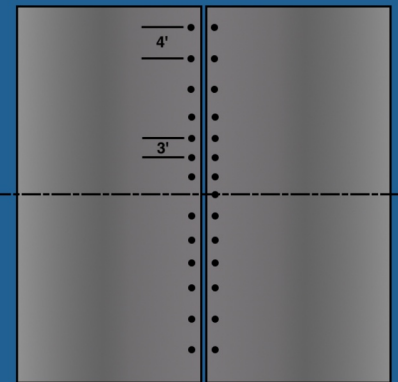
Step 1: Locate Reinforcement Steel

If not able to visually locate steel through seams or concrete deterioration, use a rebar scanner or GPR to locate steel. Mark steel locations to avoid hitting during drilling process.



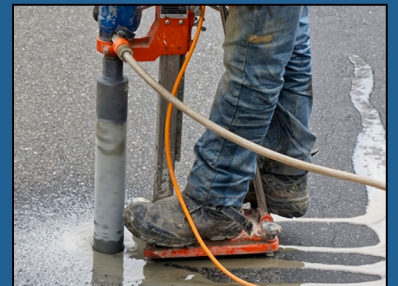
Step 2: Determine Anchor Locations

When applicable, follow project specific engineered designs for anchor placement. Manufacturer's design is to locate first anchor at the center point of the span, then place anchors 3' apart in each direction from to the end of the driving lanes. Spacing can then be increased to 4' in parking lanes.



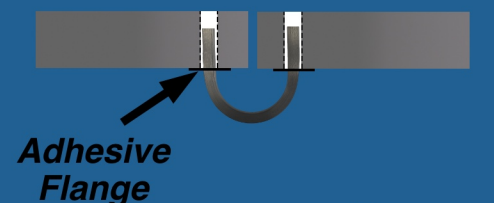
Step 3: Core Drill

Use anchor as a guide to located the exact position of holes to be drilled on each side of the seam. Core drill 1.5" diameter holes through the slab.



Step 4: Insert Anchor

Peel adhesive backing off flanges and place them 3.5" from the end of the anchor stem. Insert the anchors on the bottom side of the slab so that the flange is holding them in place.



Step 5: Inject Epoxy

From the top side, fill entire hole with anchoring epoxy. Trowel to smooth surface. Allow 3 hours to cure before applying surface coating.

